

Table of Contents

1.Safety and Maintenance Instruction

2.Features Overview

3.Product Specifications

4.Product Overview

The Overview of Projector

The Overview of Function Keys

The Overview of Remote Control

5.Basic Operation

6.System Setup

7.Download Media Files from PC

I Projection Synchronizes with PC Screen

I USB Mass Storage

8.Battery Recharging

9.Trouble Shooting

10.Accessories

User Manual for Multi Media Mini Projector

Thank you for buying this portable multi media mini projector.

This is a “Portable”, “Hand-size” projection device to play Movie, Music & Photo on a 50 inches projection screen size.

With built-in 3M optical light engine which is most advanced technology with the smallest size of projectors’ core light engine in core optical source, this mobile projector is perfect for business presentation, teaching etc.

Safety and Maintenance Instruction

To prolong the life of the mini projector, all the following safety, operating instructions and maintenance should be read, adhered to and followed before the unit is operated.

For your safety

- 1、 Please carefully read this user manual before operating the projector.
- 2、 Take a few moments to review the user manual while using it for the first time.
- 3、 Do not store or operate the unit where it can drop into water or other liquid ,cares should be taken so that water or other liquid can not be spilled onto the unit.
- 4、 Protect the unit from pinch or strike, always place it on a flat dry stable place.
- 5、 The optical light engine is the one of the most important parts of the unit, great care should be taken to protect it from collision or press.
- 6、 The unit should be situated away from direct sunshine or heat sources, such as radiator,electric heaters,heat registers,stoves or other units(including amplifiers) which produce heat, avoid placing it on top of stereo equipment that radiates heat.
- 7、 Unplug this unit during lightning storms or when unused for long periods of time.
- 8、 Use this unit for its intended use as described in this user manual

Maintenance and precaution

1. Please clean the unit with a soft dry chiffon.
2. Do not touch the light engine lens directly with hands or sharp items, do not spray any cleanser directly on the light engine lens.
3. Do not place any objects on the unit or press it hard.
4. Never block the air outlet of the unit with materials such as cloth while the unit is working.(air outlet as shown in Figure I)

Features Overview

- I Support photo format: JPG、 BMP
- I Support video format: AVI、 MOV、 MP4
- I Support music format: MP3、 WMA
- I Support text format:TXT
- I Support USB, projection synchronizes with PC screen
- I Support basic setup
- I Support OTG, data transmission from PC through USB
- I Support remote control

Product Specifications

User Manual for Multi Media Mini Projector

- l Product dimension:130*55*22 MM;
- l Resolution:640*RGB*480;
- l Brightness: 15 cd/m² (projection distance: 1000MM);
- l Contrast:80:1;
- l Display technology:LCoS(Liquid Crystal on Silicon)
- l Backlight type: LED;
- l Min projection distance: 210MM(5.6 inches)
- l Max projection distance: 2500MM(72 inches)
- l Built-in memory:128MB—4GB;
- l Card type:SD/MMC;
- l Built-in speaker:8R/1W*1;
- l Earphone out:stereo speaker out.
- l Power supply: DC +5V/2A DC terminal:3.5*1.3*6MM;
- l Power consumption:6W;
- l Built-in battery:3.7V/2050 mAH;
- l Li-polymer battery:120 minutes battery time(rechargeable) .

Product Overview

The Overview of Projector

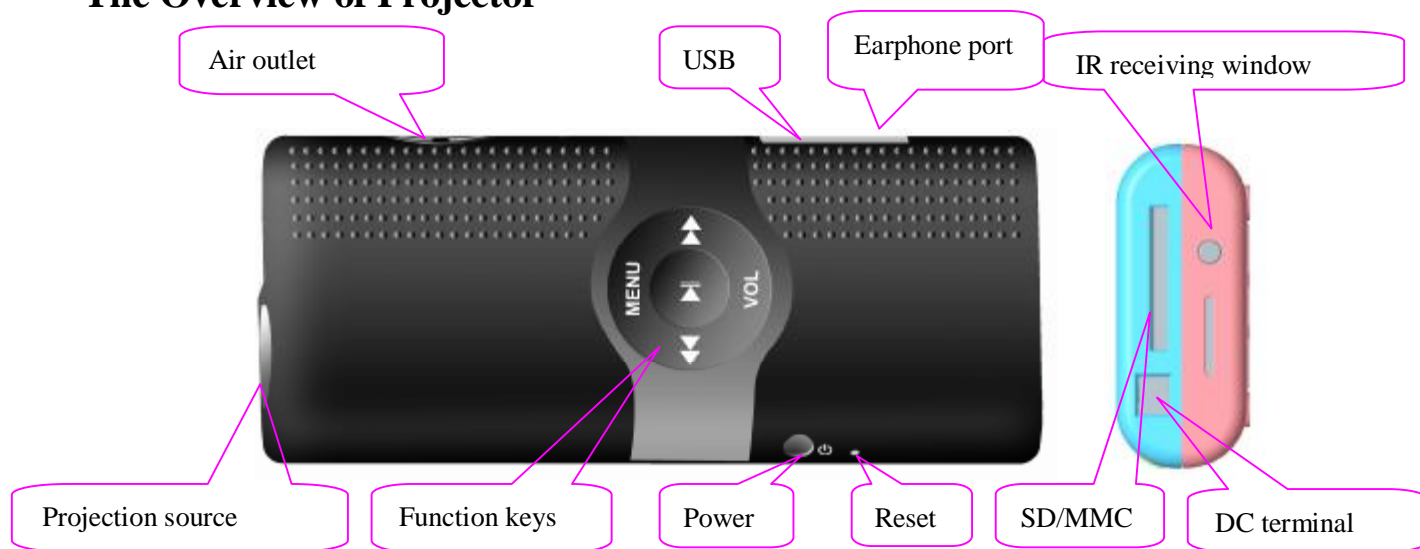


Figure I Projector Overview

The Overview of Function Keys

S.P.:Short Press

L.P.:Long Press

Key	MENU		PHOTO		MUSIC		MOVIE		EBBOK		SETUP		OFF
MENU	S.	Memory device	S.	To prev. screen	S.P.	To prev. screen	S.	To prev. screen	S.	To prev. screen	S.	To prev. screen	-

switching

P

User Manual for Multi Media Mini Projector

	L. P.	-	L. P.	-	L.P.	-	L. P.	-	L. P.	-	L. P.	-	
VOL	S. P.	Move the cursor up/down	S. P.	Volume control	S.P.	Volume control	S. P.	Volume control	S. P.	Set automatic page turning time	S. P.	-	-
	L. P.	-	L. P.	-	L.P.	-	L. P.	-	L. P.	-	L. P.	-	
LEFT	S. P.	Move the cursor left	S. P.	Switch to prev. photo	S.P.	Move the cursor up	S. P.	Prev.	S. P.	Prev. page	S. P.	Move the cursor up	-
	L. P.	-	L. P.	-	L.P.	-	L. P.	-	L. P.	-	L. P.	Setting point decreases	
RIGHT	S. P.	Move the cursor right	S. P.	Switch to next. photo	S.P.	Move the cursor down	S. P.	next	S. P.	next page	S. P.	Move the cursor down	-
	L. P.	-	L. P.	-	L.P.	-	L. P.	-	L. P.	-	L. P.	Setting point increases	
ENTER	S. P.	confirm	S. P.	-	S.P.	Play/pause	S. P.	Play/pause	S. P.	Switch between Automatic page turning or manual page turning	S. P.	confirm	-
	L. P.	-	L. P.	-	L.P.	-	L. P.	-	L. P.	-	L. P.	-	
POWER	L. P.	Long Press for 3 seconds to power off	L. P.	Long Press for 3 seconds to power off	L.P.	Long Press for 3 seconds to power off	L. P.	Long Press for 3 seconds to power off	L. P.	Long Press for 3 seconds to power off	L. P.	Long Press for 3 seconds to power off	Long Press for 3 seconds to power on

User Manual for Multi Media Mini Projector

Prompt:reset the unit if it freezes and /or is not working properly. Insert a thin, pointed object into Rese(as shown in Figure I) The unit will reset itself and turn back on automatically.

The Overview of Remote Control

POWER	power on/off
UP	move the cursor up
DOWN	move the cursor down
LEFT	move the cursor left
RIGHT	move the cursor right
ENTER	play/pause/confirm
SETUP(OSD)	basic function setup
MUTE	voice on/off
CALENDAR	undefined
PHOTO	photo mode
SLIDESHOW	slideshow mode
MUSIC	music mode
MOVIE	video mode
EXIT	exit, back to prev. screen in turn
ZOOM	enlarge photos under Photo Browse mode . But invalid under SLIDE SHOW mode
VOL+ VOL-	volume control
MENU	Main menu

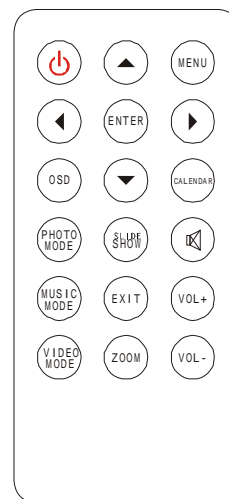


Figure II Remote Control

Note:After power off by remote control, if the projector is not plugged with AC adaptor., only pressing “POWER” on the projector can power on it again.

Basic Operation

1、 Power on

- 1) Long press “POWER” on the projector for 3 seconds, the screen will show **boot screen**.If the built-in battery is too weak to power on, recharge the battery before power on, or power on while on charge.

Boot screen:

User Manual for Multi Media Mini Projector



Figure III Main Menu

- 2) Press MENU on the projector or EXIT on the remote control to switch icons between storage device (such as NAND, SD) and function (such as PHOTO, MOVIE, MUSIC), then press LEFT or RIGHT to select corresponding icon and start playing.

2、Photo mode

- 1) After power on, press “PHOTO” icon on the main menu, then press “ENTER” on the projector or directly press “PHOTO MODE” on the remote control to enter photo mode.
- 2) Under Photo Mode, press “LEFT” or “RIGHT” to select photo.
- 3) Press “MENU” on the projector or “EXIT” on the remote control to return to prev. screen in turn.
- 4) Press “VOL” on the projector or “VOL+, VOL-” on the remote control to adjust the volume (under SLIDE SHOW mode)

3、Video mode

- 1) After power on, press “MOVIE” icon on the main menu, then press “ENTER” on the projector or directly press “VIDEO MODE” on the remote control to enter video mode.
- 2) Under video mode, press “LEFT”, “RIGHT” to select video files.
- 3) Press “MENU” on the projector or “EXIT” on the remote control to return to prev. screen in turn.
- 4) Press “VOL” on the projector or “VOL+, VOL-” on the remote control to adjust the volume.

4、Music mode

- 1) After power on, press “MUSIC” icon on the main menu, then press “ENTER” on the projector or directly press “MUSIC MODE” on the remote control to enter music mode.
- 2) Under music mode, press “LEFT, RIGHT” to select music chapter, then press “ENTER” to play.
- 3) Press “MENU” on the projector or “EXIT” on the remote control to return to the prev. screen in turn.
- 4) Press “VOL” on the projector or “VOL+, VOL-” on the remote control to adjust the volume.

5、File management

- 1) After power on, press “FILES” icon on the main menu, then press “ENTER” on the projector to enter file

User Manual for Multi Media Mini Projector

management mode.

- 2) Under file management mode, press “LEFT” or “RIGHT” to select file, then long press “ENTER” to edit the selected file **by copying or deleting**

Note: Under file list screen, pressing “LEFT” on the remote control can also edit file.

A:select “copying to internal” to copy files from SD/MMC card to NAND FLASH.

B: select “delete files” to delete files from SD/MMC card or from NAND FLASH.

- 3) Press “MENU” on the projector or “EXIT” on the remote control to return to the prev. screen in turn.

Note: files can not be copied from NAND FLASH to SD/MMC card.

6、Ebook reading

1) After power on, press “Ebook” icon on the main menu, then press “ENTER” on the projector or directly press “Ebook” on the remote control to enter Ebook mode.

2)Under Ebook mode, press “LEFT” or “RIGHT” to move to the prev. or next page.

3)Press “ENTER” to switch between automatic page turning or manual page turning .

4)Press “DOWN/VOL” to set automatic page turning intervals.

5)Press “MENU”on the projector or “EXIT” on the remote control to return to prev. screen in turn.

System Setup

After power on, press “SETUP” icon on the main menu, then press “ENTER” on the projector or directly press “SETUP” on the remote control to enter system setup, as shown in Figure IV:



Figure IV: Main Menu Setup.

- 1). Photo Setup
- 2). Video Setup
- 3). Music Setup
- 4). System Setup

Operating Instruction: Press “LEFT” or “RIGHT” to select sub-options, then press “ENTER” to enter detailed settings. Press “MENU” on the projector or “EXIT” on the remote control to return to the main menu.

1 、Photo Setup

Press “Photo Setup” icon of the “Start Up Setting”, then press “ENTER” to enter Photo Setup screen., as shown

User Manual for Multi Media Mini Projector

in Figure V :

Operating instruction:Short Press “LEFT” or “RIGHT” to select setting options, then long press “LEFT” or “RIGHT” to change parameters of the selected option.



Figure V Photo Setup Screen

1) Display Mode:

- | Slideshow:Auto start the photo slideshow.
- | Thumbnail:enter nine thumbnail photos preview mode ,select any thumbnail photo to start playing
- | Browse Mode: manual preview mode

2) Display Ratio: photo is centered between margins.

- | Full Screen: photo is displayed in full screen
- | Fit to Screen: photo is displayed to fit the screen.
- | Crop to Fill: photo is displayed in its original size

3) Slideshow Duration: set intervals between slideshow photos

4) Slideshow Repeat: set photo repeat mode

- | Repeat: repeat mode
- | Once: only play for once

5) Slideshow Effect: set photo slideshow display mode

- | There are altogether 11 slideshow display modes.

2、Video Setup

Press “Video Setup” icon of the “Start Up Setting”, then press “ENTER” to enter Video Setup screen, as shown in Figure VI:

Operating instruction:Short Press “LEFT” or “RIGHT” to select setting options by moving cursor up and down, then long press “LEFT” or “RIGHT” to change parameters of the selected option.



Figure VI Video Setup Screen.

1) Display Mode:

- | Full Screen: display video in full screen
- | Original Size: display video in its original size.

2) Play Mode: set video repeat mode

- | Once: only play for once, then return to video file list
- | Repeat: repeat all video files

3) Auto Play: set auto play on/off

- | On : select "VIDEO" on the main menu, then press "ENTER" to enter video auto play mode.
- Off : select "VIDEO" on the main menu, then press "ENTER" ,it will show list of video file on the screen, select one file and press "ENTER" to start playing the selected file.,

3、 Music Setup

Press "Music Setup" icon of the "Start Up Setting", then press "ENTER" to enter Music Setup screen, as shown in Figure VII:

Operating instruction: Short Press "LEFT" or "RIGHT" to select setting options by moving cursor up and down, then long press "LEFT" or "RIGHT" to change parameters of the selected option.



Figure VII Music Setup Screen

1) Play Mode:Set music repeat mode

- I Repeat Once:only play for once,then return to video file list
- I Repeat:repeat all music files

2) Music Effect:set music effect

- I Normal:normal mode
- I Pop:pop mode
- I Classic:classic mode
- I Rock:rock mode
- I Soft:soft mode
- I Jazz:jazz mode
- I DBB:DBB mode

3) Auto Play:set music auto play

- I On:Press "Music" on the main menu, then press "ENTER" to start music auto play
- Off :Press "Music" on the main menu, then press "ENTER" , it will show list of music file on the screen, select one file and press "ENTER" to start playing the selected file.,

5、 System Setup

Press "System Setup" icon of the "Start Up Setting", then press "ENTER" to enter System Setup screen, as shown in Figure VIII

Operating instruction:Short Press "LEFT" or "RIGHT" to select setting options by moving cursor up and down, then long press "LEFT" or "RIGHT" to change parameters of the selected option.

User Manual for Multi Media Mini Projector



FigureVIII System Setup Screen

- 1) **Language: set language**
- 2) **Brightness: set brightness**
- 3) **Contrast: set contrast**
- 4) **Saturation: set saturation**
- 5) **Hue: set hue**
- 6) **Gamma: set gamma**
- 7) **Volume: set volume**
- 8) **Reset default setting: reset default setting**
- 9) **Version: display current software version**

7 Download Media Files from PC

Projector supports data transmission from PC through USB 1.1/2.0

Note: This projector is a **precision photoelectronic product**, to protect it from damage caused by error operating, great care should be taken while operating.

Operating instruction:

- 1) Long press "POWER" on the projector for 3 seconds to enter the main menu.
- 2) **Connect DC5V/2A power adaptor**
- 3) Connect the projector with PC by USB cable attached in the accessories, insert one end to PC and the other to projector' s USB port.
- 4) After confirm, the screen displays "Connecting PC" ,as shown in the following figure:

User Manual for Multi Media Mini Projector



Figure IX USB connect with PC

- 5) After USB is auto identified, the system will enter USB connecting status.
- 6) Open “My computer” on desktop, it will show three removable disks as shown in the following figure:



Figure X Removable disk icon

Note: It is normal if the icons of the removable disks or volumes on your PC differ from these here we show in the manual, as icons differ between PC operating system.

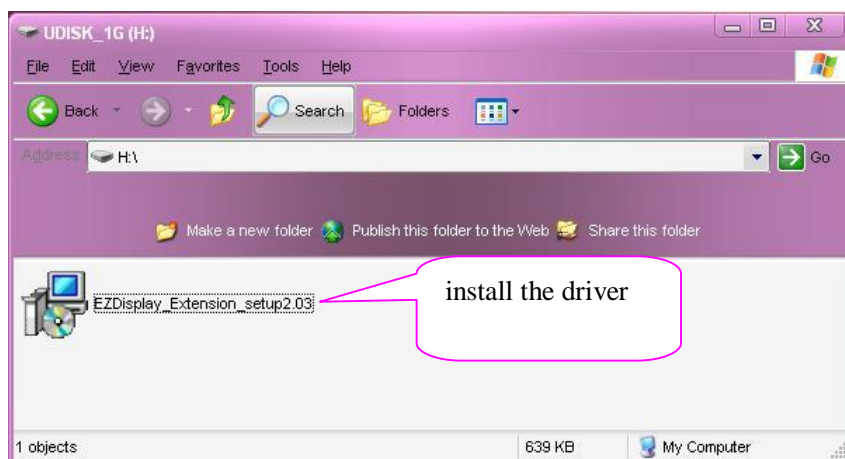
- 1) H (Nand Flash): built-in memory which can store photo, movie, music...etc
- 2) I (Ezdisplay): USB driver disk which is fixed to the projector, this disk is only for storing driver.
- 3) J (SD CARD) : memory card, only when SD/MMC is inserted to the projector can this disk be used.

7.Driver installation

Please do install the attached disk in the accessories or driver attached in the projector onto PC according to the following steps before using it for the first time.

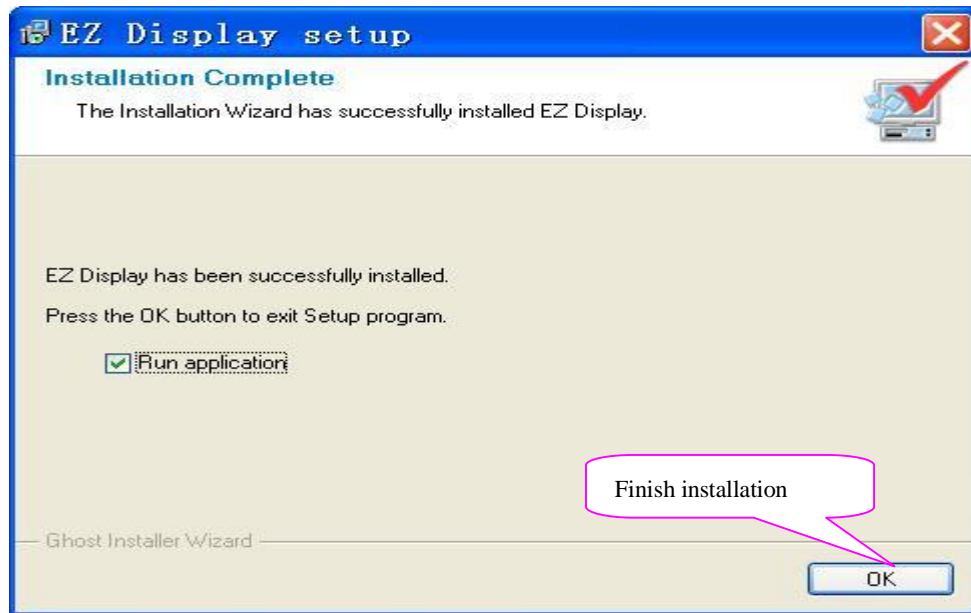
- 1) Please open removable disk “Ezdisplay” and run “EZDisplay_Extension_setup.exe” in it.

Note: as our driver is keeping updating, file name would be also changed, please take our latest driver version in the built-in memory as the standard.



Setp 1. install driver

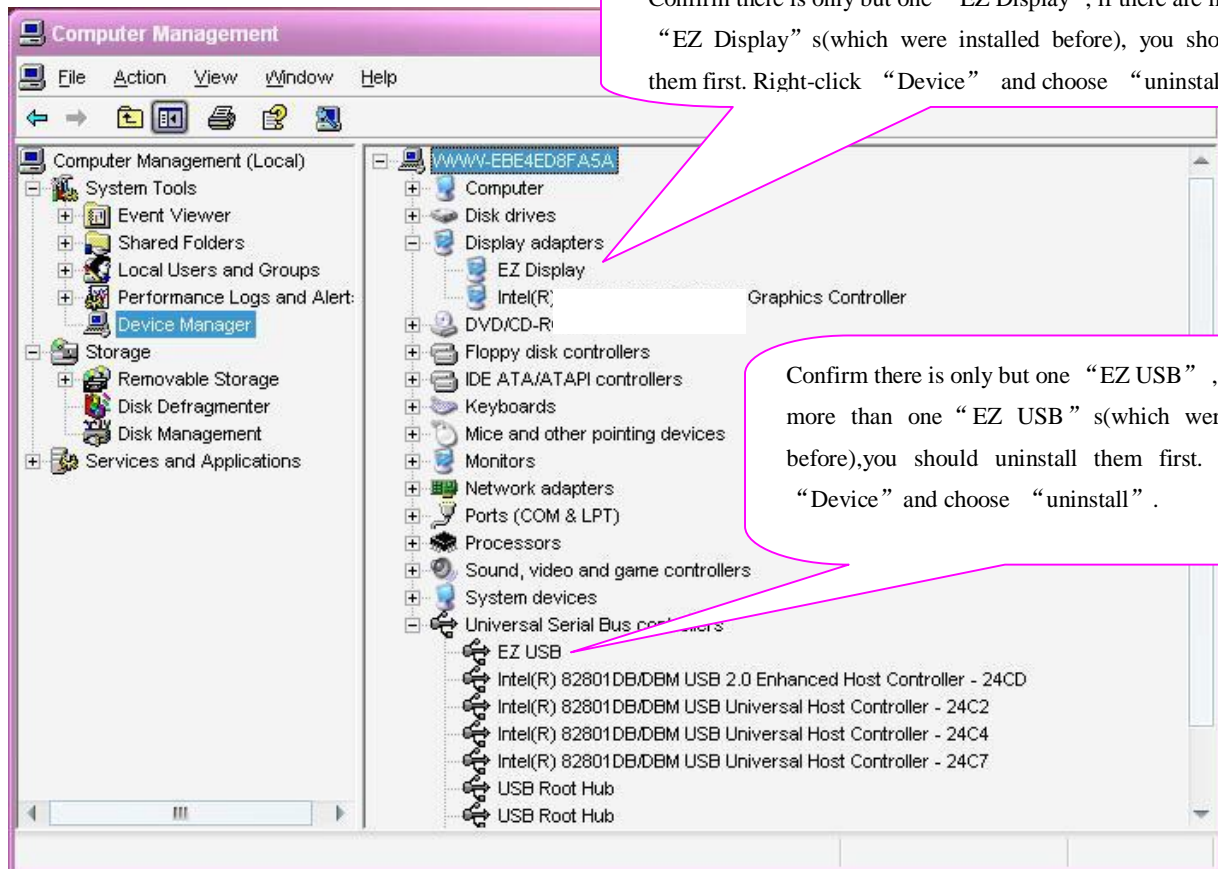
User Manual for Multi Media Mini Projector



Step 2 Finish installation

- 2) Run driver: first press "Start", then "Programs", then "EZ Display" and finally "EZ Display".
- 3) Reboot your PC
- 4) **Confirm USB driver is successfully installed.**

Return to "desktop" after reboot, right-click "My Computer" and select "Device Manager" in "Computer Management", then press "Display adapters", make sure there is "EZ Display" in "Display adapters" and "EZ USB" in "Universal Serial Bus controllers".

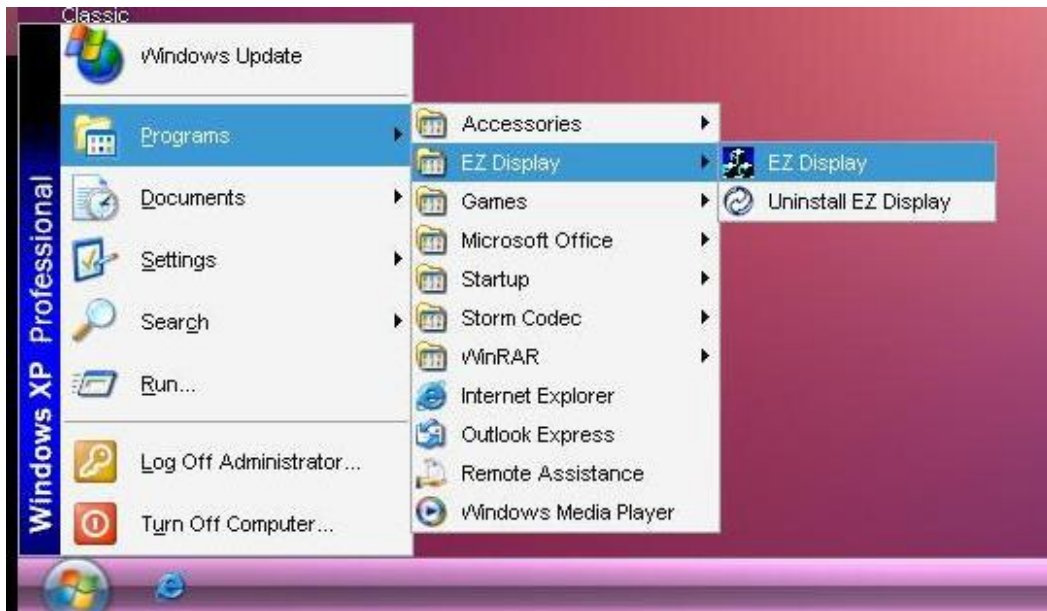


Step 3 Confirm USB device successfully installed

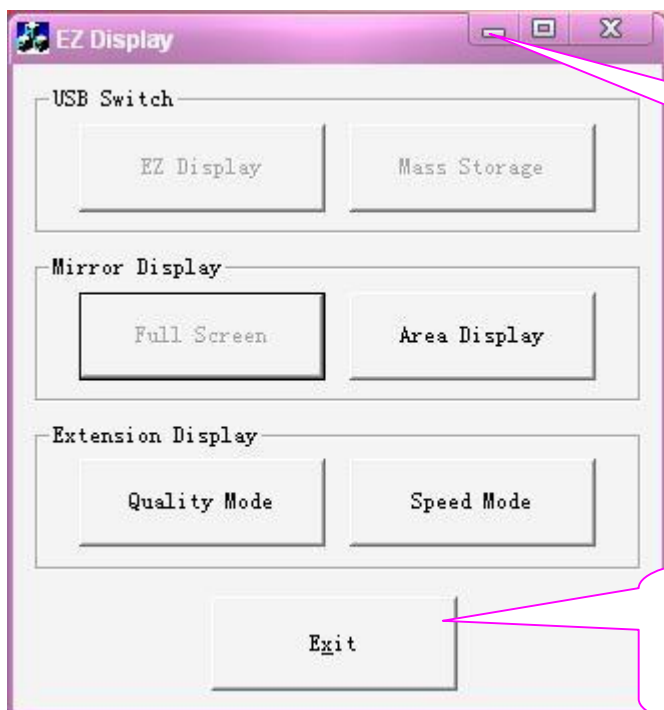
By then, USB device driver has been successfully installed. No need to install it again in the use process.

8 Run the driver

Operating instructions: first press “Start”, then “Program”, then “EZ Display” in “EZ Display”, as shown in Figure X :



Step 4 Run the driver



Press “Minimize” to run USB SUB Display

Press “Exit” to close USB SUB Display(Projector stops display VGA Output)

Step 5 USB Connection Interface

USB Switch options:

1. EZ Display: projection synchronized with PC screen, the following four functions are available under this mode.

(1) Full screen: projection synchronizes PC screen, this mode is used in Demo lecture,

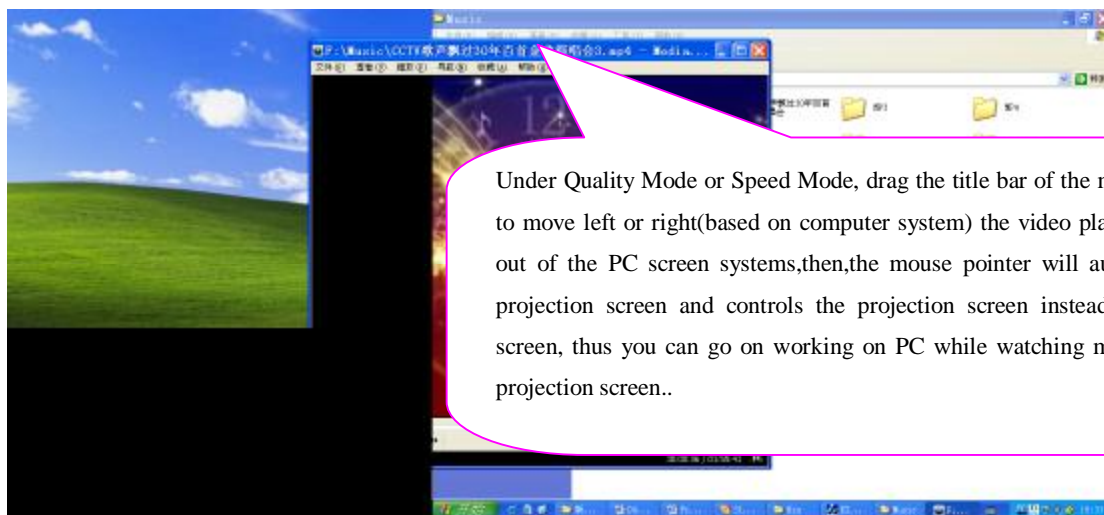
User Manual for Multi Media Mini Projector

teaching and photo viewing.

(2) Area Display: project part of the PC screen according to the actual resolution of the projector.

(3) Quality Mode: suitable for viewing video file to give priority access to high-quality display.

(4) Speed mode: suitable for viewing video file to give priority access to a smoother display.



2) Mass Storage

Under this mode, the built-in memory is used as a removable disk in which you can store photo, movie and music etc. You can also copy photo or music onto the built-in memory, which you can play when offline, that is, when the projector disconnects from PC, you can also play photo or music stored in the built-in memory.

Note: Under Mass Storage mode, PC screen can not be projected synchronously through USB.

Only under "EZ Display" mode can we start synchronous projection.

Battery Recharging

The projector is built with high capacity rechargeable Li-Polymer battery. When battery has run out, please recharge it before operation or operate it while recharging with AC adaptor.

- 1) The red LED indicator will be on while charging, and it will be off after charging finished. The battery will be fully charged in about 3 hours.
- 2) The projector can be operated while charging.

Note: the DC adaptor must be DC 5V/2A. Never use power adaptors with different specifications.

Trouble Shooting

This part is to introduce some solutions to common problems, if any malfunction occurs, please check the following first. If it still can not be obviated, please contact the dealer or authorized service center in time, do not disassemble or attempt to repair it by yourself.

The following are some common problems and solutions for reference:

- 1 Projector can not power on

User Manual for Multi Media Mini Projector

- I The battery has run out. Please recharge it with correct DC adaptor before operate.
 - I Fails to press “POWER” button. The power button is a precision component, press it carefully.
- 2 Image blurring
- I Focus is not well adjusted. Adjust the gear of the lens to a proper position.
 - I The light source of the projector is too close or too far from the projection plane. The best distance is between 200MM-2000MM
- 3 No sound
- I Volume is setted “MUTE” or volume is setted too low.
- 4 Remote control has no function
- I Check if the insulation sheet in the remote control is taken off, or the battery in the remote control has run out, replace with new button cell batteries to try
- 5 Fails to connect with PC
- I Poor contact or the USB cable is with quality problems. Make sure the connection with USB cable is perfect and USB cable itself is of good quality.

Accessories

Carefully unpack the package and make sure that you have all the following items. In the event that any item is missing or if you find any mismatch or damage, please promptly contact the dealer.

1、 AC adaptor (5V2A) 1 piece



The projector is attached with a AC adaptor in the accessories. The power input of the AC adaptor ranges from 100V to 240V, covering all standard voltage around the world, it can be used all over the world.

Note: The above photo of AC adaptor is for reference only, please take the actual item as the standard.

2、 USB Cable 1 piece



User Manual for Multi Media Mini Projector

3、 Remote Control **1 piece**



4、 User Manual **1 piece**



5、 Protective Pouch **1 piece**